

FR701® 2100

Panel



Eggshell
144



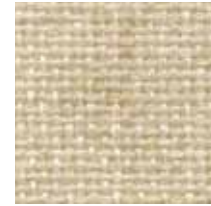
Pearl
481



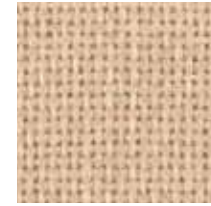
Opal
394



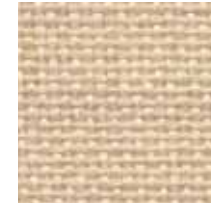
Desert Sand
758



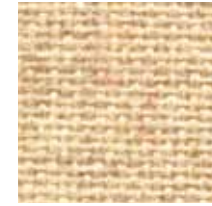
Wheat
130



Buff
460



Bone
748



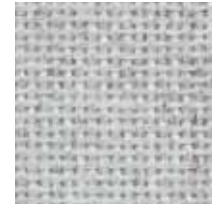
Vanilla Neutral
403



Straw
747



Sunshine
797



Silver Papier
538



Blue Neutral
401



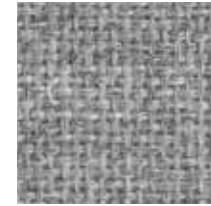
Blue Papier
539



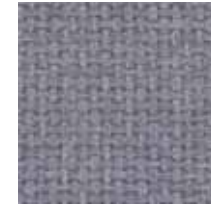
Cement Mix
750



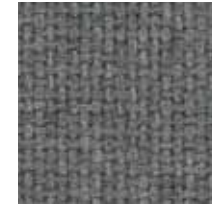
Silver Neutral
406



Grey Mix
238



Steel Grey
471



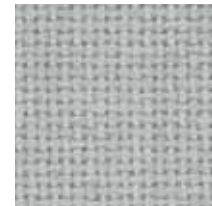
Flannel
795



Medium Grey
298



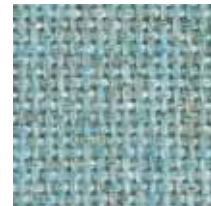
Black
408



Coin
794



Verte Papier
561



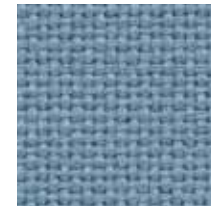
Green Neutral
402



Lake
756



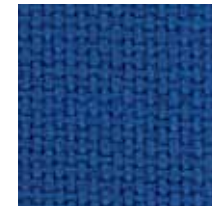
Crystal Blue
175



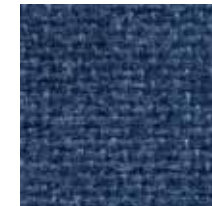
Bayberry
486



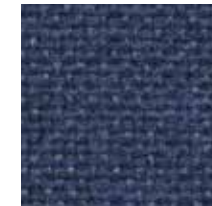
Wedgewood
150



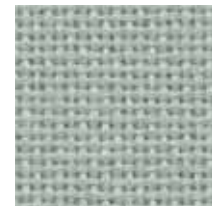
Cobalt
420



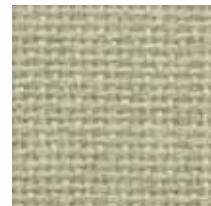
Baltic
153



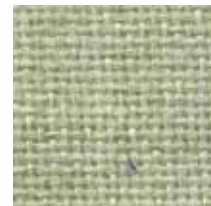
Blue Plum
553



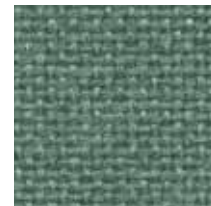
Eucalyptus
468



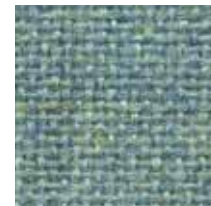
Leaf
755



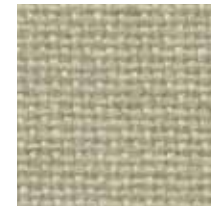
Stream
757



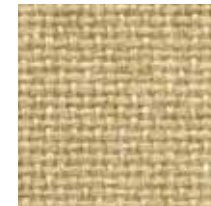
Blue Spruce
467



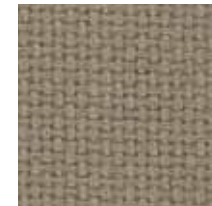
Aquamarine
381



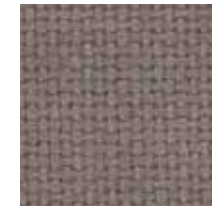
Dune
749



Light Moss
754



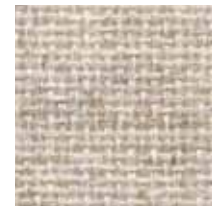
Earth
792



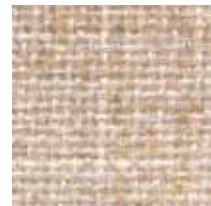
Moleskin
796



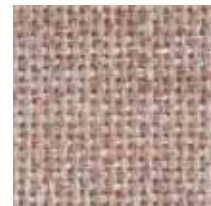
Chocolate
793



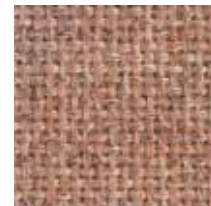
Quartz
380



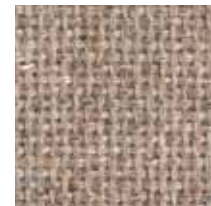
Apricot Neutral
404



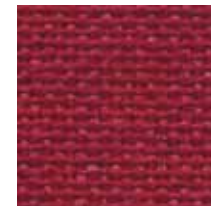
Cherry Neutral
400



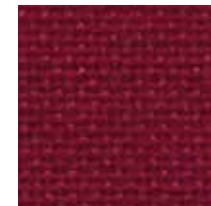
Cinnabar
422



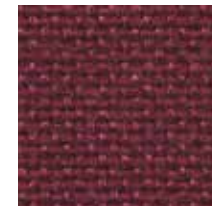
Pumice
423



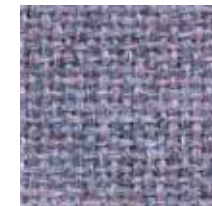
Red
799



Claret Accent
418



Deep Burgundy
556



Amethyst
424



Iris
798

Anchorage 2335

Panel



Birch
2129



Vanilla
2130



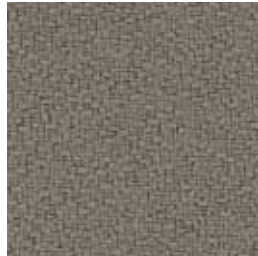
Sunshine
2082



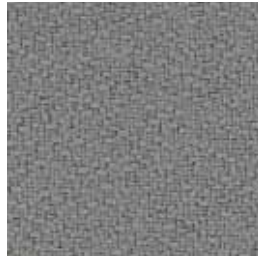
Straw
2034



Angora
2035



Goose
2049



Asteroid
2053



Coffee Bean
2083



Amber
2020



Pumpkin
2021



Geranium
2084



Magenta
2692



Red Delicious
2014



Henna
2052



Mulberry
2044



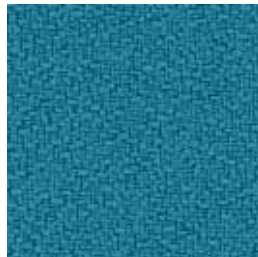
Aubergine
2036



Slate
2017



Quarry Blue
2026



Waterfall
2691



Wolf
2027



Lapis
2094



Thistle
2085



Cobalt
2045



Midnight
2025



Green Olive
2048



Eucalyptus
2047



Green Apple
2087



Cumin
2050



Willow
2028



Fossil
2093



Graphite
2079



Onyx
2016

Crosstown 2526

Panel



Ray
030



Stucco
070



Chamois
050



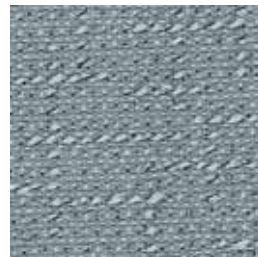
Fieldstone
060



Sterling
061



Buff
080



Waterfront
040



Cement
010



Graphite
021



Guilford of Maine®

Digit 2978

Panel
Acoustic



Vanilla
010



Latte
021



Mint
020



Cloud Blue
022



Stone
024



Metallic Taupe
023



Blue Mist
030



Green Tea
040



Charcoal
051



Black Steel
050



Guilford of Maine®

Digit 2978

Panel
Acoustic

Specifications

Content

14% post-consumer recycled polyester
86% pre-consumer recycled polyester

Weight

12.1 ± 1.0 oz./lin. yd.

Width

66" min. useable

Repeat

6.1" vertical, 8.2" horizontal

Cleaning Code

Standard Care Label W-S. Clean with water based cleaning agents, foam or pure, water free solvents. Vacuuming or light brushing is recommended to prevent dust and soil buildup.

Performance



Colorfastness to Light (AATCC 16 Option 3)
Grade 4 min. at 40 hours



Colorfastness to Crocking (AATCC 8)
Grade 4 min. dry & Grade 3 min. wet



Breaking Strength (ASTM D5034)
200 lbf min. warp and 125 lbf min. fill

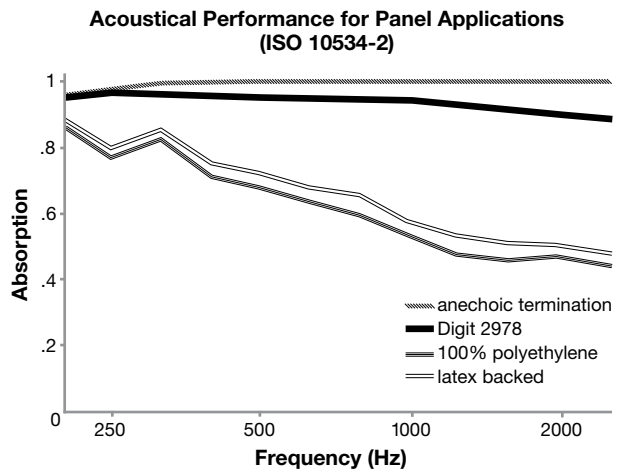


Flammability (ASTM E84)
Class I or A

*ACT[®] registered certification marks.

Acoustical Performance

The plot below summarizes impedance tube measurements of absorption of an anechoic termination and various fabrics in front of the anechoic termination.



NRC of anechoic termination
1.00

NRC of fabric in front of anechoic termination
.95

Miscellaneous

Every effort has been made to ensure color accuracy of the digital images, however, please order a sample before specification. Application testing of this product is recommended. Colors may vary between dye lots. This is a directional fabric.

Proudly woven in the USA supporting our local communities.

Visit guilfordofmaine.com for samples.



Terratex is a registered trademark of True Textiles, Inc. and designates fabrics that are made from 100% recycled or compostable material using increasingly sustainable manufacturing practices to produce a high quality product that is recyclable at the end of its useful life.



CO₂ emissions from 100% of the electricity used by the manufacturer to produce this product have been measured and offset in accordance with The CarbonNeutral Protocol.



This pattern is included in the underwriters laboratory panel fabric recognition program. Additional testing of this U.L. recognized component fabric is not required on approved panels from participating manufacturers.

Guilford of Maine

guilfordofmaine.com

800 544 0200 Customer Care
616 554 2255 Fax

03/15

Hatchet 2977

Panel
Acoustic



Baton
010



Scythe
030



Armament
031



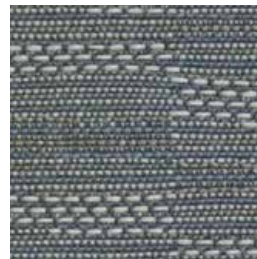
Brass
020



Axe
040



Dirk
050



Blackjack
060



Smoke
061



Guilford of Maine®

Hatchet 2977

Panel
Acoustic

Specifications

Content

14% post-consumer recycled polyester
86% pre-consumer recycled polyester

Weight

12.1 ± 1.0 oz./lin. yd.

Width

66" min. useable

Repeat

11" vertical, 16.4" horizontal

Cleaning Code

Standard Care Label W-S. Clean with water based cleaning agents, foam or pure, water free solvents. Vacuuming or light brushing is recommended to prevent dust and soil buildup.

Performance



Colorfastness to Light (AATCC 16 Option 3)
Grade 4 min. at 40 hours



Colorfastness to Crocking (AATCC 8)
Grade 4 min. dry & Grade 3 min. wet



Breaking Strength (ASTM D5034)
200 lbf min. warp and 150 lbf min. fill

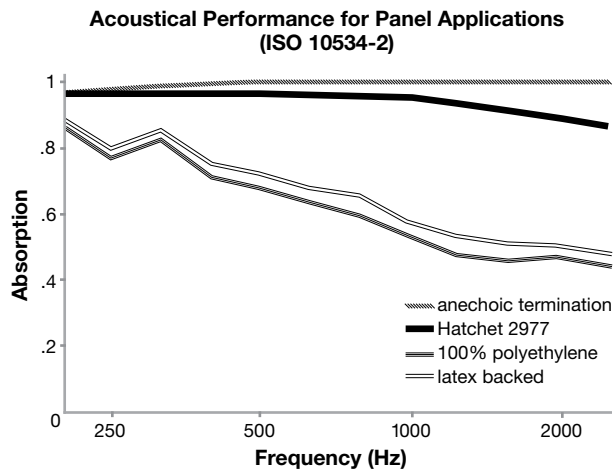


Flammability (ASTM E84)
Class I or A

*ACT[®] registered certification marks.

Acoustical Performance

The plot below summarizes impedance tube measurements of absorption of an anechoic termination and various fabrics in front of the anechoic termination.



NRC of anechoic termination
1.00

NRC of fabric in front of anechoic termination
.95

Miscellaneous

Every effort has been made to ensure color accuracy of the digital images, however, please order a sample before specification. Application testing of this product is recommended. Colors may vary between dye lots. This is a directional fabric.

Proudly woven in the USA supporting our local communities.

Visit guilfordofmaine.com for samples.



Terratex is a registered trademark of True Textiles, Inc. and designates fabrics that are made from 100% recycled or compostable material using increasingly sustainable manufacturing practices to produce a high quality product that is recyclable at the end of its useful life.



CO₂ emissions from 100% of the electricity used by the manufacturer to produce this product have been measured and offset in accordance with The CarbonNeutral Protocol.



This pattern is included in the underwriters laboratory panel fabric recognition program. Additional testing of this U.L. recognized component fabric is not required on approved panels from participating manufacturers.

Guilford of Maine

guilfordofmaine.com

800 544 0200 Customer Care
616 554 2255 Fax

03/15